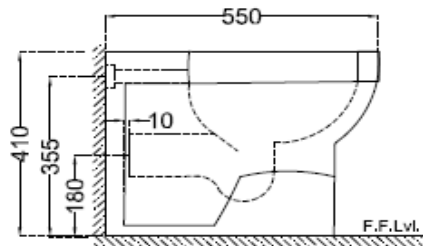
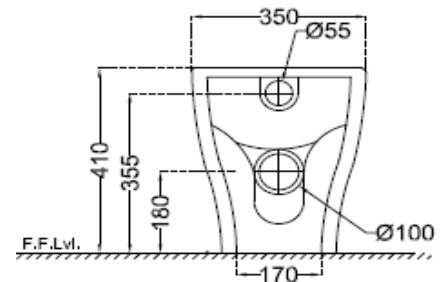


TOP VIEW



SIDE VIEW



BACK VIEW

**General Information**

Product Code	AIS-WHT-101955P180SPPSM
Brand	Essco
Colour	White
Type	Back To Wall WC
Material	Ceramic - Vitreous China

**Product Specification**

Product Dimension	350x550x410 mm
Bowl Opening (Inner Dimension)	250x330 mm
Product Net Weight	27.0 Kg
Product Gross Weight	31.0 Kg
Packaging Dimension	550X440X420 mm
Outlet	Horizontal
Trap Distance	P Trap - 180 mm
Inlet And Outlet Hole Dimension	Internal diameter of inlet hole dia. $\varnothing 58 \pm 3$ mm
	External diameter of outlet hole dia. $\varnothing 100 \pm 5$ mm
Product Features	Sleek Design With Rectangular Shape PP Slim Soft Close Seat Cover Water Usage - 3/6 LPF With Wash Down Flushing Anti Bacterial Glaze on Ceramic, Smooth Glaze Surface Material - Vitreous China (VC) Product With Complete Genuine Accessories Complete Trap Wash, Box Rim Design

**ACCESSORIES INCLUDED**

PP Soft Close Slim Seat Cover	AIS-WHT-103S
Floor fixing screw	ZPS-SNS-FB01
Inlet Outlet Gasket	ZPS-WHT-GK01

**ACCESSORIES RECOMMENDATION**

Concealed cistern	JCS-WHT-2400S, 2400P, 2400, 2400WS, 2400WP, 2400FS, 2400FP, 2431P, 2431FP, 2431, 2431S, 2431FS
-------------------	--

**CARE AND CLEANING GUIDELINES**

- Vitreous china sanitary ware products are fragile in nature and need to be handled with care (to avoid personal injury) at all times during its storage, handling, installation and use thereafter.
- The product is heavy and it is recommended that two persons hold it while it is being fixed.
- Carefully inspect the new product for damage before installation.
- Risk of product damage. Over tightening may cause breakage or chipping of vitreous china.
- Risk of external leakage. Do not lift or rock the bowl after placement.
- Always test your cleaning solution on an inconspicuous area on the product before applying it to the entire surface.
- Do not allow cleaners to sit or soak on the product.
- Use a soft, dampened sponge or cloth to clean. Never use abrasive material like a bristle brush or scouring pad.
- Wipe surfaces clean and rinse completely with water immediately after applying cleaners.
- Clean Chrome, stainless steel surfaces once a week. Do not use cleaners containing chloride on chrome, stainless steel. If used, rinse the surface immediately to prevent corrosion.
- Wherever chrome plating is used on the products, use only warm water to clean and then dry with a soft cloth.

**QUALITY MANAGEMENT SYSTEM - ISO 9001**



DISCLAIMER: Our every effort has been made to ensure factual accuracy, the information presented subject to changes due to requirements in different sites, markets and/ or countries. All dimensions are in mm (Tolerance  $\pm 5$  MM). Jaquar reserves the right to make the necessary amendments at any time without prior notice.  
 # For Installation Refer Actual Product